



## Colindale Street , Monkston Park, MK10 9PX

King Estate Agents are proud to market this Stephenson built, five/six bedroom home, located in the sought after location of Monkston Park. The house boasts five bedrooms, three bath/shower rooms and three reception rooms. Outside there is a detached double garage with further bedroom/studio above with en suite.

The accommodation in brief comprises an entrance hall with two storage cupboards and access to the downstairs cloakroom. The study comes off of the hallway and has a double glazed window providing views to the front aspect. The living room is a good size around 24ft in length and has double doors leading into the dining room, which has direct access to the garden, floor to ceiling storage as well as a feature glass sloping roof. The kitchen is situated next to the dining room and can be also accessed directly from the hallway. The modern kitchen has granite worktops, an island with breakfast bar, integrated appliances and direct access into the separate utility room.

On the first floor is the 23ft master bedroom with double fitted wardrobes and modern refitted en suite with walk in shower enclosure. There are two further double bedrooms and a family

## Accommodation

FIVE/ SIX DOUBLE  
BEDROOMS

DETACHED EXECUTIVE  
HOUSE

DOUBLE GARAGE WITH  
STUDIO/BEDROOM ABOVE

LIVING ROOM & DINING  
ROOM

STUDY

KITCHEN

MASTER BEDROOM WITH  
EN SUITE

THREE FURTHER  
BATH/SHOWER ROOMS

bathroom.

The second floor, loft conversion, has two double bedrooms and a separate shower room.

Outside there is a private rear garden with a driveway to the rear of the property leading to the detached double garage, complete with a studio/additional bedroom above. This room has an en suite and could make an excellent guest bedroom, potential for an annexe or various other uses. The property also has the benefit of a Podpoint EV charge point.



## Ground Floor

Entrance Hall -

Cloakroom -

Study -

Living Room -

Dining Room -

Kitchen -

Utility Room -

## First Floor

First Floor Landing -

Master Bedroom -

En suite -

Bedroom Two -

Bedroom Three -

Bathroom -

## Second Floor

Second Floor Landing -

Bedroom Four -

Bedroom Five -

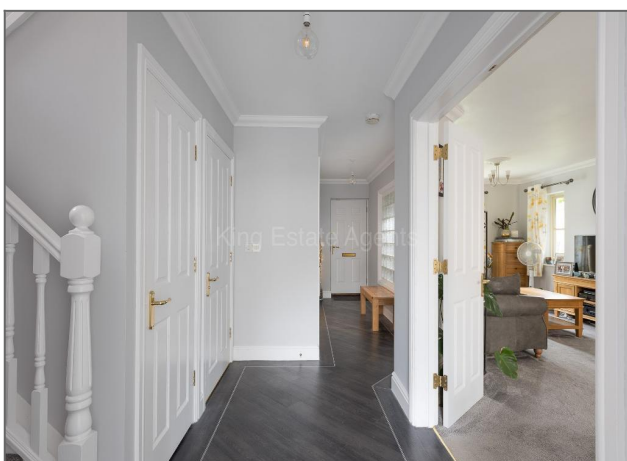
## Exterior

Double Garage with additional bedroom -

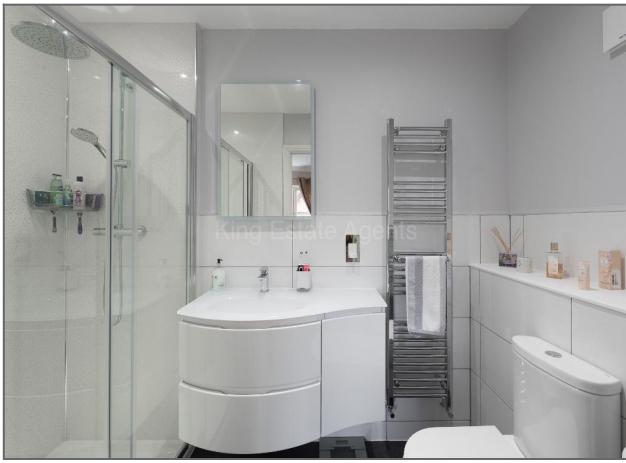
## Location

Monkston Park has fantastic road and transport links with the M1 junction 14 and Milton Keynes Coachway within easy reach. For commuters Milton Keynes mainline station is 3.5 miles away with direct lines in to London Euston. Local shopping facilities are situated a short walk away in Oakgrove, with a Waitrose, Costa Coffee and other retail outlets. Kingston Centre which is approximately 1.8 miles away and has an array of shops and restaurants, in addition there is a handy local shop within Monkston park for day to day shopping. The property falls within catchment for excellent local schools most of which are walking distance. Monkston Park flanks the Ouzel Valley Park which is perfect for those who enjoy walking and cycling.















Total Area: 2329 ft² ... 216.4 m² (excluding double garage, guest bedroom / studio, ensuite)  
Total Area including double garage, guest bedroom / studio with ensuite: 3054 ft² ... 283.7 m²

Floor plans are for layout purposes only and are not intended to be scale drawings.  
All measurements, including window and door openings are approximate and should not be relied upon for valuation purposes.  
Please check all dimensions, shapes & compass bearings before making any decisions reliant upon them.  
MK Property Photography accepts no liability whatsoever for any error or omission or inadvertent misstatement in a floor plan.  
Copyright MK Property Photography.

Energy Efficiency Rating

Score	Energy rating	Current	Potential
92+	A		
81-91	B		
69-80	C	75   C	81   B
55-68	D		
39-54	E		
21-38	F		
1-20	G		