



## Highland Drive , Broughton, MK10 7FA

King Estate Agents are delighted to bring to the market this three bedroom detached house in the sought after area of Broughton.

This property offers approximately 904 sqft of living space set across two floors and benefits from spacious entrance hall leading into a generous sized dual aspect living room and spacious kitchen dining area. The modern kitchen space offers a range of base and eye level units as well as integrated appliances and offers a generous space for dining towards the front of the room.

The first floor offers three double bedrooms, with the master boasting an en-suite and fitted wardrobes. There is two further double bedrooms as well as a modern family bathroom.

This property also benefits from a spacious landscaped rear garden with side access on to the driveway and garage.

## Accommodation

Large detached house

Sought after location

Three Double Bedrooms

Single garage with parking for  
2 cars

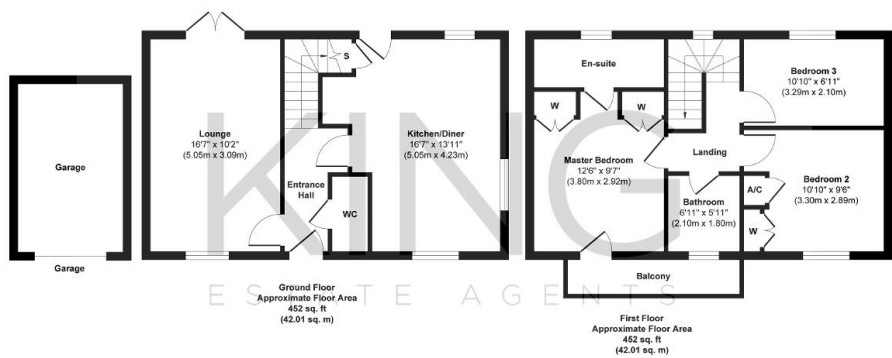
Balcony

Master Bedroom with En-Suite

Well presented throughout

Approx 904 sqft





Approx. Gross Internal Floor Area 904 sq. ft / 84.02 sq. m

Floorplans are for layout purposes only and are not intended to be scale drawings.  
All measurements are approximate and should not be relied upon for valuation purposes.  
Produced by Elements Property

