

KING
ESTATE AGENTS



4 BEDROOM DETACHED | KITCHENER DRIVE, MILTON KEYNES | £610,995

KEY FEATURES

- Stunning four bedroom detached home
- Open plan kitchen dining family room
- Dedicated home study
- Spacious living room with bay window
- Utility Room
- Four double bedrooms
- Ensuite and Bathroom
- Single garage and driveway
- Part exchange available

DESCRIPTION

* Part exchange your current home for this wonderful brand new four bedroom house*

The Holden features a bright, modern kitchen that has been designed with integrated dining & family areas, including French doors leading to the garden & an adjoining utility. There is also an elegant bay fronted lounge & home study.

Upstairs are four double bedrooms, the main bedroom with luxurious en suite & a family bathroom.

A single garage, driveway and rear garden complete this home.





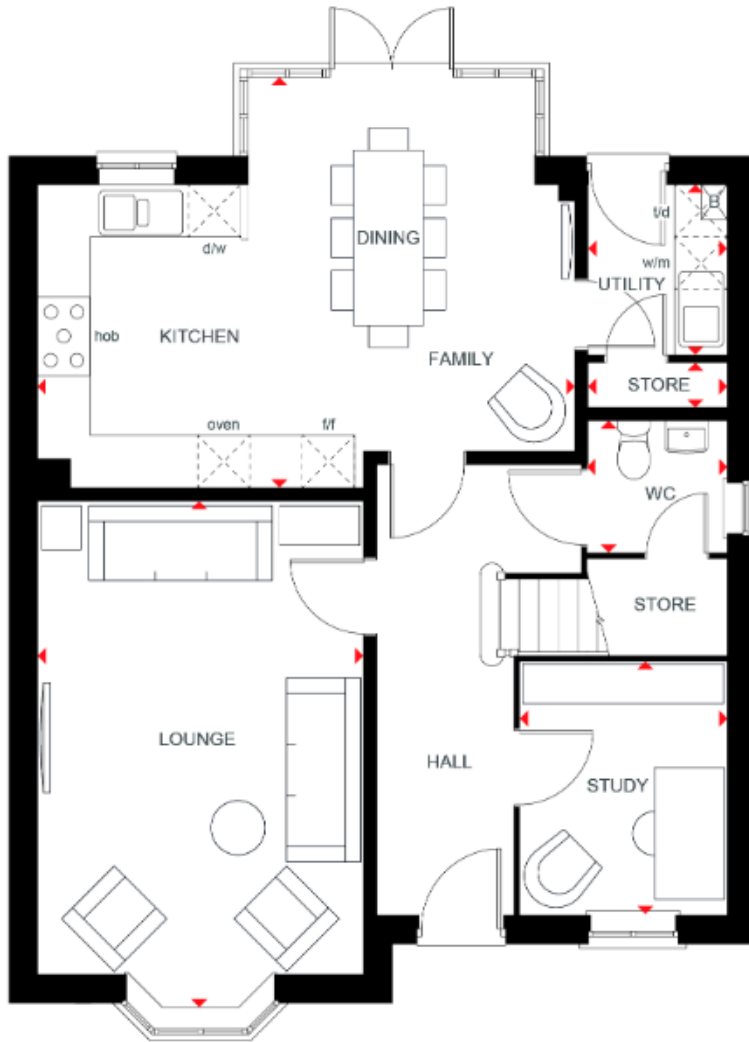






DISCLAIMER

These particulars are thought to be materially correct though their accuracy is not guaranteed and they do not form part of any contract. All measurements are approximate and we have not tested any fitted appliances, electrical or plumbing installation or central heating systems.



KING
ESTATE AGENTS

11 Furzton Lake
Shirwell Crescent
Milton Keynes
Buckinghamshire
MK4 1GA

Tel: 01908 272724

E-mail: info@kingstateagents.com

Web: www.kingstateagents.com

