



Angel Close , Pennyland, MK15 8AQ

King Estate Agents are delighted to bring to market this spacious and well presented three bedroom semi detached house in Pennyland. This home boasts three double bedrooms, two bath/shower rooms and a carport.

The entrance hall which has under-stair storage and cloakroom leads to all downstairs rooms to include a lovely sized lounge, which is bright and airy, with both a large window and door leading on to the garden. The kitchen and dining room has a fitted kitchen with ample space for dining and a door opening on to the patio. With windows to both the front and rear of this room, this is another bright and spacious room.

The first floor offers three double bedrooms, all with windows overlooking the garden and a family bathroom aswell as a further shower room.

The rear garden boasts a patio area and artificial lawn which creates two other seating spots and there is a rear door leading on to the carport. The garden is surrounded by trees and shrubs, offering a private space within a sunny aspect.

Accommodation

Three bedroom home

Semi detached

Living room

Kitchen/Dining room

Carport

Rear garden

Bathroom and shower room

Three double bedrooms

Ground Floor

Entrance Hall -

Cloakroom -

Living Room -

Kitchen and Dining Room -

First Floor

Bedroom One -

Bedroom Two -

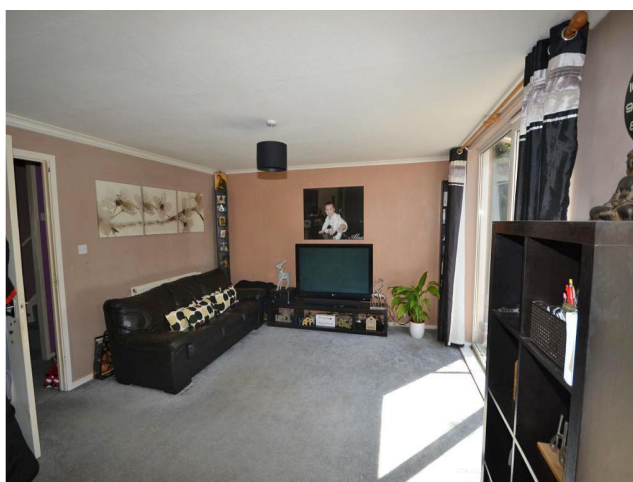
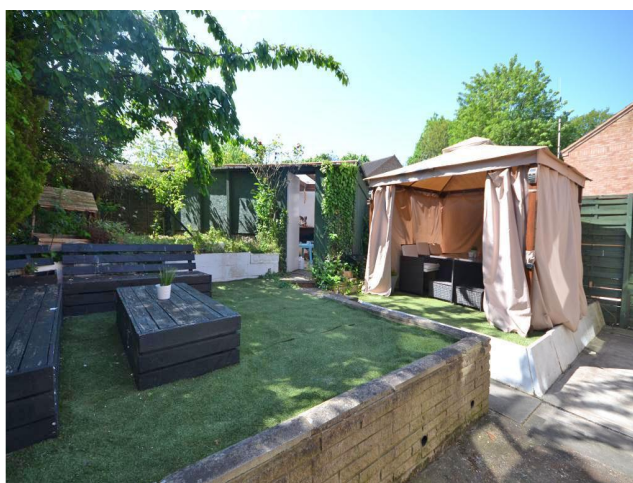
Bedroom Three -

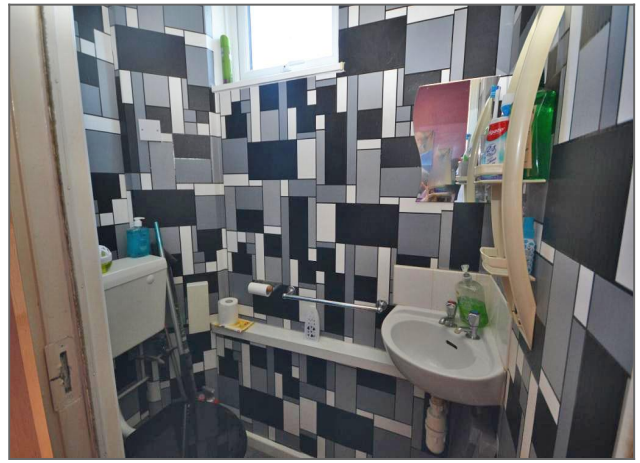
Bathroom -

Shower Room -

Exterior

Front and rear Garden -





Energy Efficiency Rating			
Score	Energy rating	Current	Potential
92+	A		
81-91	B		86 B
69-80	C	73 C	
55-68	D		
39-54	E		
21-38	F		
1-20	G		

