



## Whitehaven Close , Broughton, MK10 7AF

King Estate Agents are delighted to bring to the market this wonderfully presented, four bedroom detached residence situated down a quiet road in Broughton, offering generous ground floor living space, three shower rooms and a double garage.

This beautiful family home offers approximately 1932 sqft of living accommodation set over two floors and opens with a light and spacious entrance hall with cloakroom and storage space. From here you also have access to all downstairs rooms to include a dual aspect living room with a door a window overlooking the garden. A modern kitchen and dining area with patio doors leading on to the garden and an attached utility room. The study to the front of the house completes the downstairs accommodation.

The first floor offers four generous sized bedrooms aswell as two ensembles and a family shower room. The master bedroom boasts fitted wardrobes and a four piece ensuite to include both a bath and separate shower cubicle with a modern tiled surround. Bedroom Two has a storage cupboard aswell as an ensuite shower room. Bedroom three has a lovely balcony with a tree lined outlook and bedroom four also benefits from fitted wardrobes. The main family, shower

## Accommodation

Executive four bedroom detached home

Double garage and driveway

Approx 1932 sqft

Dual aspect living room

Modern kitchen and dining room

Utility Room

Study

Three shower rooms

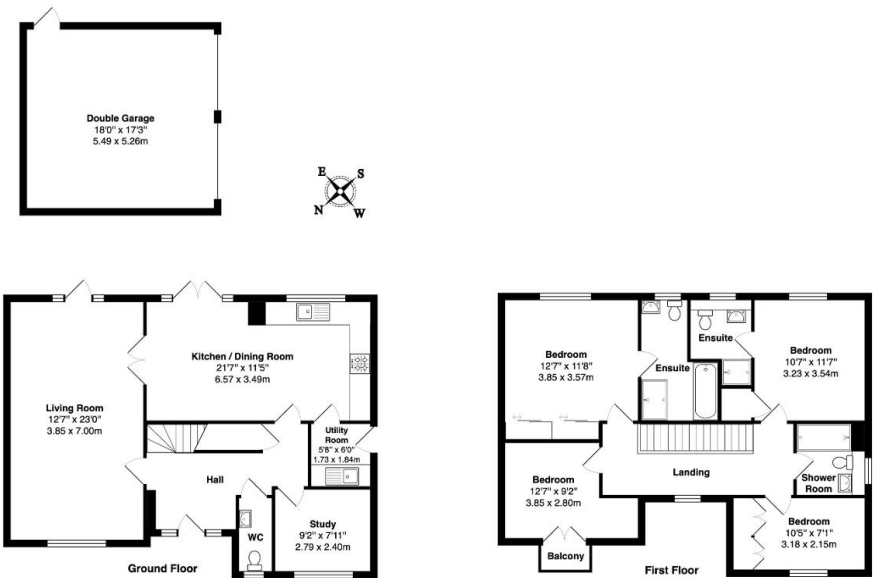
room boasts a three piece white suite and modern, marble effect tiling.

The rear garden faces in a south easterly direction, so both the morning and afternoon sun can be enjoyed. The garden has a nice patio area and a mature tree and shrub border. There is also access to the double garage and front gate leading to the driveway.









Approximate Area: 1622 ft² ... 150.7 m² (excluding double garage, balcony)  
Approximate Area of Double Garage: 310 ft² ... 28.8 m²  
Approximate Total Area: 1932 ft² ... 179.5 m²

Floor plans are for layout purposes only and are not intended to be scale drawings.  
All measurements, including window and door openings are approximate and should not be relied upon for valuation purposes.  
Please check all dimensions, shapes & compass bearings before making any decisions reliant upon them.  
MK Property Photography accepts no liability whatsoever for any error or omission or inadvertent mis-statement in a floor plan.  
Copyright MK Property Photography www.mkpropertyphotography.co.uk

