



London Road , Broughton, MK10 9AA

King Estate Agents are delighted to bring to the market 'The Gables' a beautiful four bedroom cottage full of character and charm, set in the picturesque conservation area of Broughton Village. This characterful home boasts around 2500sqft of living accommodation and is set back from the road, offering a large driveway and frontage. Originally a traditional Victorian cottage, this home was sympathetically extended during the 1970s and has since been lovingly updated by the current owner.

With two front entrance doors this home has a versatile layout to meet ones needs, with a ground floor layout to comprise a large entrance hall with ample storage space and doors leading to the three ground floor reception rooms and a shower room.

The dual aspect, cosy sitting room, previously was two separate rooms, has been combined to create one lovely space and boasts a Gas fire with brick surround.

The refitted kitchen has been tastefully designed to combine both the homes charm aswell as the modern advantages of a new kitchen. Finished with shaker style doors and wood effect laminate work tops there are also two integrated ovens and space for an American fridge freezer. There are two handy utility rooms on the ground floor, one of which combines the downstairs WC.

Accommodation

Character home

Four double bedrooms

English country garden

Refitted Kitchen/Breakfast room

Three reception rooms

Two utility rooms

En suite and bathroom

Large driveway and front garden

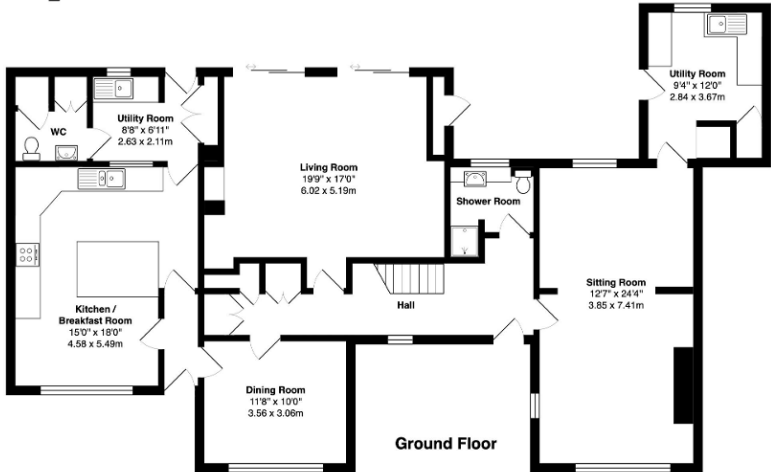
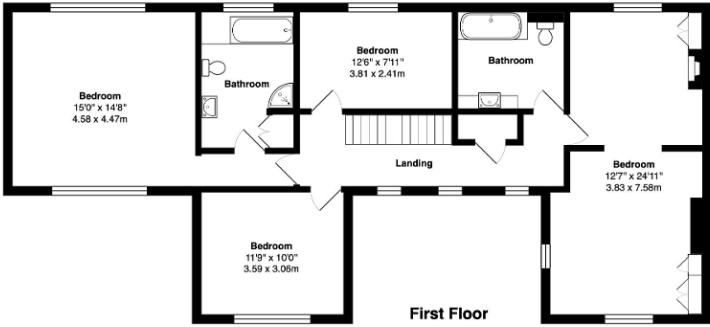
Facing in a south westerly direction the living room found to the back of the house has a modern feel and boasts two sets of patio doors leading on to the garden. This room allows an abundance of natural light and is the perfect spot to relax in day both during the day and evening.

To the first floor you will find the fabulous master bedroom with four piece en suite bathroom. Bedroom two has a sitting area, offering a charming space with lovely views and was originally two bedrooms, so could be converted back if required. There are two further double bedrooms and a bathroom.

Outside there is a generous driveway and garden to the front, aswell as a lovely, secluded garden to the rear with mature flowers, shrubs and trees. It's an idyllic, quintessentially English setting and the gardens reflect the sense of peace and tranquility, with plenty of hidden areas to escape and unwind in a glorious space.







Total Area: 2533 ft² ... 235.4 m²

Floor plans are for layout purposes only and are not intended to be scale drawings.
All measurements, including window and door openings are approximate and should not be relied upon for valuation purposes.
Please check all dimensions, shapes & compass bearings before making any decisions reliant upon them.
MK Property Photography accepts no liability whatsoever for any error or omission or inadvertent mis-statement in a floor plan.
Copyright MK Property Photography www.mkpropertyphotography.co.uk

