



St. Matthews Court , Bletchley, MK3 5PD

King Estate Agents are delighted to bring to the market this BRAND NEW three bedroom property, built to a high specification by a local reputable developer. The accommodation in brief comprises an entrance hall, bedroom and shower room on the ground floor, modern fitted kitchen/breakfast room and living room. The first floor comprises two large double bedrooms with storage and a bathroom. Outside there is parking to the front and a landscaped rear garden. The property is being sold with NO ONWARD CHAIN.

Accommodation

NEW BUILD

THREE BEDROOM
DETACHED HOME

FINISHED TO A HIGH
SPECIFICATION

GROUND FLOOR BEDROOM
AND SHOWER ROOM

LANDSCAPED REAR
GARDEN

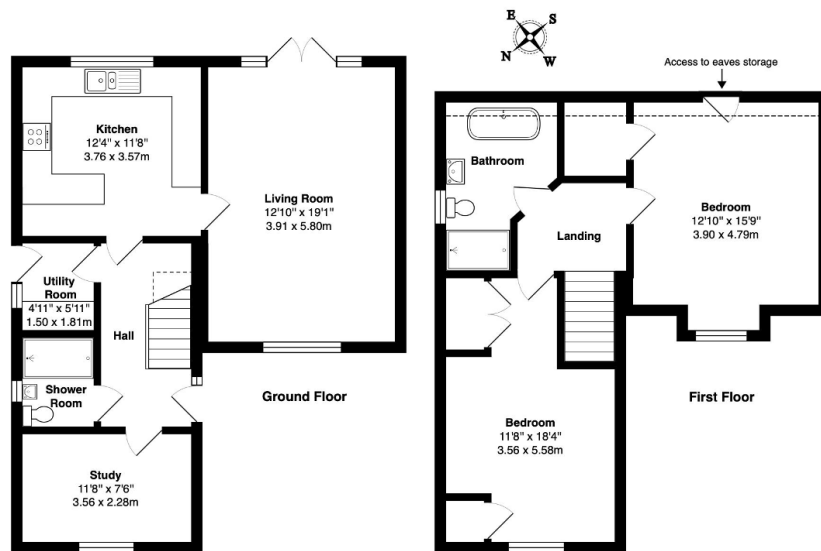
HIGH SPECIFICATION
KITCHEN

LIVING ROOM

TWO LARGE DOUBLE
BEDROOMS ON FIRST
FLOOR







Total Area: 1216 ft² ... 113.0 m²

Produced for King Estate Agents. Floor plans are for layout purposes only and are not intended to be scale drawings.
 All measurements, including window and door openings are approximate and should not be relied upon for valuation purposes.
 Please check all dimensions, shapes & compass bearings before making any decisions reliant upon them.
 MK Property Photography accepts no liability whatsoever for any error or omission or inadvertent mis-statement in a floor plan.
 Copyright MK Property Photography.