



Clover Close , Loughton, MK5 8HA

King Estate Agents are delighted to bring to market this beautiful three bedroom, detached home in one of Milton Keynes' most sought after locations, Loughton. Situated at the end of a quiet cul-de-sac this stunning home offers a mature south facing garden on a large wrap around plot, two reception rooms with bi-fold doors leading onto the gardens and three spacious double bedrooms with a large walk in dressing room. Originally built as a four bedroom house, this property benefits from immaculate presentation and high quality finishes throughout. The ground floor of this home boasts a large entrance hall with downstairs cloakroom, a stylish kitchen with island and the living room and separate dining room both feature bi-fold doors overlooking the garden. The first floor offers three generous sized double bedrooms with the master bedroom boasting an en-suite and large walk in dressing room which originally was bedroom four (this could be converted back with ease if needed) and there is also a further family bathroom. Cat 6 cabling has been installed throughout. The gardens to both front and back are well established and the rear of the property is south facing meaning the sunshine can be enjoyed all day. There is also a double garage and parking on the driveway to the front of the property.

Accommodation

- DETACHED HOME
- SOUGHT AFTER LOCATION
- THREE DOUBLE BEDROOMS (PREVIOUSLY 4 BED)
- DOUBLE GARAGE
- MATURE WRAP AROUND GARDEN
- TWO RECEPTION ROOMS WITH BI-FOLD DOORS
- EN SUITE AND DRESSING ROOM TO MASTER
- KITCHEN/BREAKFAST ROOM AND UTILITY

Ground Floor

Entrance Hall - Oak flooring, stairs rising to the first floor landing, radiator, door to;

Cloakroom - White suite fitted to comprise pedestal wash hand basin, low level WC, radiator, double glazed window to the front aspect.

Kitchen/Breakfast room - Refitted to comprise ceramic sink and drainer with mixer tap over and a cupboard under, a further range of base and eye level units, granite work surfaces with up stands, range cooker, Fridge/Freezer, integrated dishwasher, Island/Breakfast bar, oak flooring, double glazed door to garden.

Utility room - Oak flooring, stainless steel sink and drainer with mixer tap over and a cupboard under, space for washing machine, eye level unit, Megaflor hot water tank, Worcester Boiler, door to garden.

Dining room - Oak flooring, radiator, Bi-fold doors onto rear garden, door to living room;

Living room - Fireplace with log burner, oak flooring, Radiator, Bi-fold doors onto the rear garden.

First Floor

First floor landing - Access to the loft, doors to;

Master bedroom - Double glazed window to the front aspect, radiator, tv point, carpeted, archway through to dressing room/bedroom four, door to en suite;

En suite - Refitted to comprise walk in shower cubicle, low level WC, wall hung wash hand basin, heated towel rail, shaver socket, tiled flooring, partly tiled surround.

Dressing room (formerly bedroom four) - Three fitted wardrobes with matching draw unit and shelving, radiator, carpeted, double glazed window to the front aspect.

Bedroom Two - Double glazed window to the rear aspect, carpeted, tv point, radiator.

Bedroom Three - Double glazed window to the rear aspect, carpeted, tv point, radiator.

Bathroom - Refitted to comprise freestanding bath with mixer tap and shower over, wall hung wash hand basin, low level WC, heated towel rail, shaver socket, tiled flooring, partly tiled surround, double glazed window to the side aspect.

Exterior

Front - Driveway leading to the detached double garage. The garage benefits from shelving installed all along the back wall. In addition, the roof space has been boarded offering additional overhead storage.

Rear Garden - Wrap around garden with decking, patio and lawn areas, enclosed with shrub and fenced borders. Door to garage.

Location

Loughton is a sought after location for families and commuters alike, given its close proximity to Milton Keynes Central Station and catchment area for Loughton Primary School and Denbigh Secondary School. Loughton is within walking distance to Central Milton Keynes train station, making the positioning ideal for any would-be commuters travelling to London or the North. You will also find within walking distance a variety of local shops and The Centre MK shopping centre.





King Estate Agents

King Estate Agents

King Estate Agents

King Estate Agents

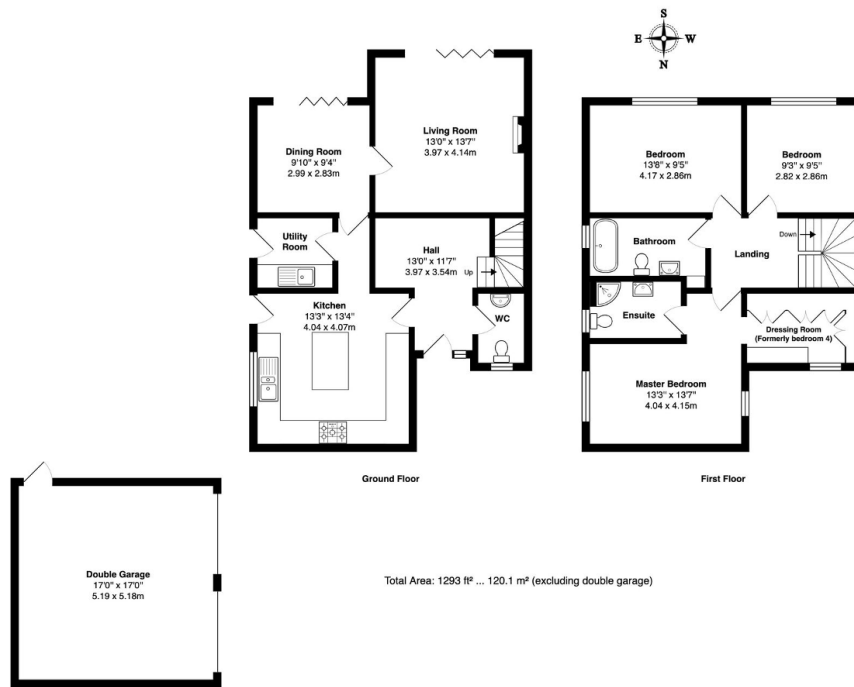
King Estate Agents

King Estate Agents

King Estate Agents

King Estate Agents





Produced for King Estate Agents. Floor plans are for layout purposes only and are not intended to be scale drawings. All measurements, including windows and door openings are approximate and should not be relied upon for valuation purposes. Please check all dimensions, shapes & compass bearings before making any decisions reliant upon them. MK Property Photography accepts no liability whatsoever for any error or omission or inadvertent mis-statement in a floor plan. Copyright MK Property Photography.