



Ivy Lane , Newton Longville, MK17 0DJ

King Estate Agents are proud to bring to the market this well presented detached bungalow, situated on a generous size mature plot, in the popular Village of Newton Longville. The property boasts three double bedrooms along with a detached double garage with workshop and loft room. The accommodation in brief comprises entrance hall, living room, kitchen/dining room, master bedroom with en suite, two further double bedrooms and a bathroom. Outside there is a wrap garden with an array of mature shrubs and trees, and a generous driveway leading to a detached double garage.

Accommodation

THREE BEDROOMS
DETACHED BUNGALOW
PRIVATE MATURE GARDEN
GENEROUS SIZED PLOT
DETACHED DOUBLE
GARAGE WITH WORKSHOP
THREE DOUBLE
BEDROOMS
EN SUITE TO MASTER
BEDROOM
KITCHEN/DINING ROOM

Ground Floor

Entrance Hall - Two storage cupboards, radiator, access to the loft, doors to;

Living room - Fireplace, double glazed window to the front aspect, radiator, double glazed french doors onto the rear garden.

Kitchen/Dining room - Refitted to comprise sink and drainer with mixer tap over and a cupboard under, a further range of base and eye level units, laminate work surfaces with a tiled surround, space for cooker, integrated fridge/freezer, washing machine, pantry, double glazed window to the rear aspect, two radiators, doors to;

Rear Lobby - Storage cupboard, door to rear.

Master bedroom - Fitted wardrobe, radiator, double glazed window to the rear aspect, door to en suite;

En suite - Fitted to comprise shower cubicle with wall mounted shower, wall hung wash hand basin with a cupboard under, low level WC, heated towel rail, partly tiled surround.

Bedroom Two - Fitted wardrobe, radiator, double glazed window to the front aspect.

Bedroom Three/ Study - Double glazed window to the rear aspect, radiator.

Bathroom - White suite fitted to comprise panel bath with shower over, wall hung wash hand basin with cupboard under, low level WC, heated towel rail, double glazed window to the rear aspect, airing cupboard.

Exterior

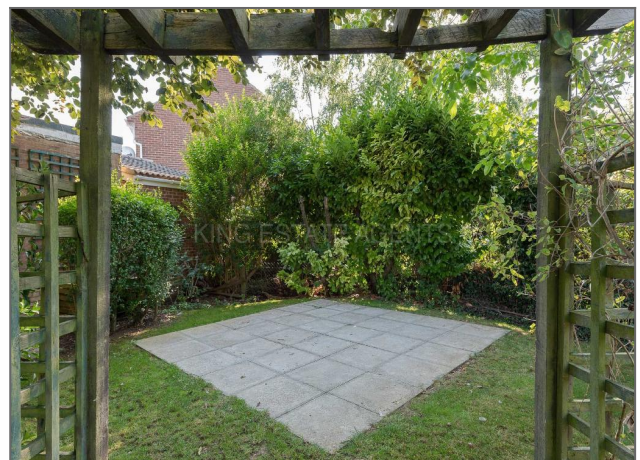
Rear Garden - Patio area leading onto a lawn, with mature trees and shrubs, enclosed by a fenced surround. A further patio area to the rear of the property with side access into the double garage.

Double Garage and Workshop - Electric roller door, power and light, workshop to the rear with stairs rising to a loft room.

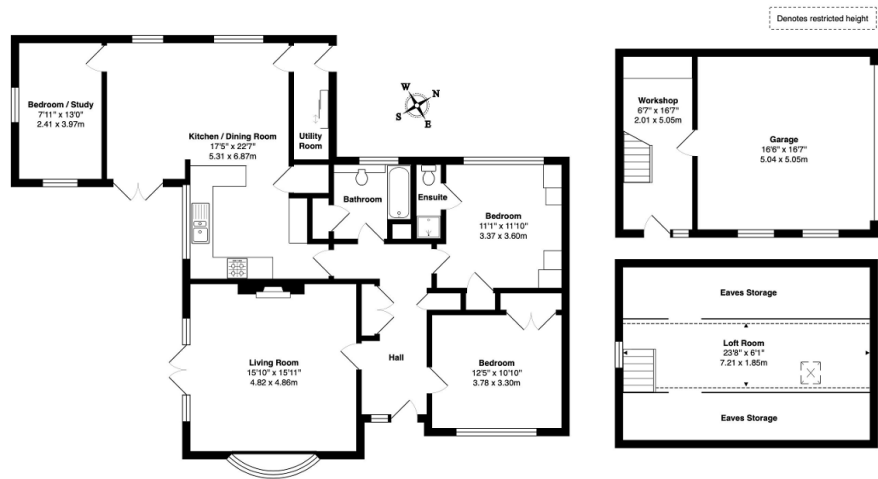
Location

The picturesque village of Newton Longville has a shop, a post office and The Crooked Billet thatched public house. It is in the catchment for the Royal Latin Grammar School in Buckingham. Newton Longville Church of England Combined School takes children between the ages of 4 and 11. This village is pleasantly situated surrounded by countryside whilst still being only a short drive to Milton Keynes.









Total Area: 1318 ft² ... 122.4 m² (excluding workshop, garage, loft room, eaves storage)

Produced for King Estate Agents. Floor plans are for layout purposes only and are not intended to be scale drawings.
All measurements, including window and door openings are approximate and should not be relied upon for valuation purposes.
Please check all dimensions, shapes & compass bearings before making any decisions reliant upon them.
MK Property Photography accepts no liability whatsoever for any error or omission or inadvertent mis-statement in a floor plan.
Copyright MK Property Photography.

