



Millington Gate , Willen, MK15 9HT

EXECUTIVE FOUR BEDROOM HOME*SOUGHT AFTER LOCATION*DOUBLE GARAGE*THREE RECEPTION ROOMS*REFITTED KITCHEN AND BATHROOMS*NO ONWARD CHAIN King Estate Agents are proud to offer for sale this extremely well presented four bedroom home, situated in the sought after location of Willen. The accommodation in brief comprises entrance hall, cloakroom, living room, dining room, kitchen/breakfast room and garden room. Upstairs there is a master bedroom with fitted wardrobe and en suite, three further bedrooms and a family bathroom. Outside there is a gravelled driveway leading to a detached double garage, and a mature landscaped rear garden.

Accommodation

FOUR BEDROOM

DETACHED HOME

SOUGHT AFTER LOCATION

IMMACULATE
PRESENTATION
THROUGHOUT

REFITTED
KITCHEN/BREAKFAST
ROOM

LIVING ROOM/DINING
ROOM/GARDEN ROOM

REFITTED EN SUITE AND
BATHROOM

DOUBLE GARAGE AND
DRIVEWAY



Ground Floor

Entrance Hall - Stairs rising to the first floor landing, oak flooring, Under stair storage cupboard, doors leading to;

Cloakroom - Fitted to comprise a low level WC, pedestal wash hand basin, double glazed window to rear aspect.

Living room - Log Burner, Oak flooring, double glazed windows to the front aspect, double glazed french doors leading on to the rear garden, double doors leading into the garden room.

Garden Room - Double glazed with doors onto the garden.

Dining room - Double glazed window to the front aspect, door to kitchen/breakfast room.

Kitchen/Breakfast Room - Refitted to comprise sink and drainer with mixer tap over and a cupboard under, a further range of base and eye level units, granite work surfaces with upstands. Range cooker with extractor fan over, integrated dishwasher, space for fridge/freezer, double glazed windows overlooking garden with a double glazed door also leading onto the garden.

First Floor

First floor landing - Doors to all bedrooms and the bathroom.

Master bedroom - Double fitted wardrobe, double glazed window to the front aspect, radiator, door to en suite;

En suite - Refitted to comprise shower cubicle with electric shower over, wash hand basin with vanity unit, low level WC, fully tiled surround, double glazed window to the front aspect, Radiator.

Bedroom Two - Newly fitted 'Sharps' double wardrobes and drawers, double glazed window to the front aspect, radiator.

Bedroom Three - Newly fitted 'Sharps' Wardrobes, radiator, double glazed window to the rear aspect.

Bedroom Four - Double glazed window to the rear aspect, radiator.

Family Bathroom - Refitted to comprise panel bath with wall mounted shower over, wash hand basin with vanity unit, low level WC, airing cupboard, fully tiled surround, double glazed window to the rear aspect, radiator.

Exterior

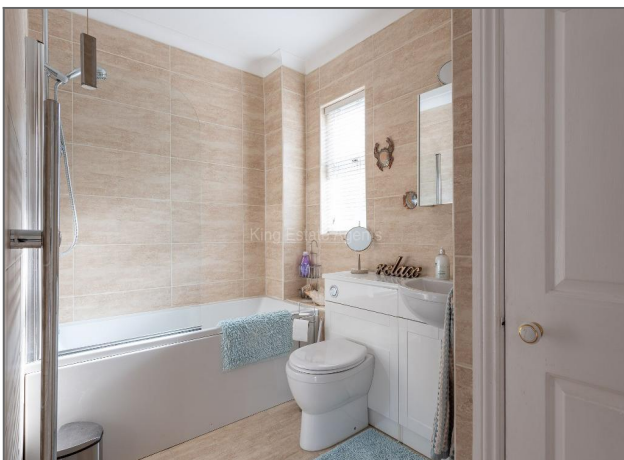
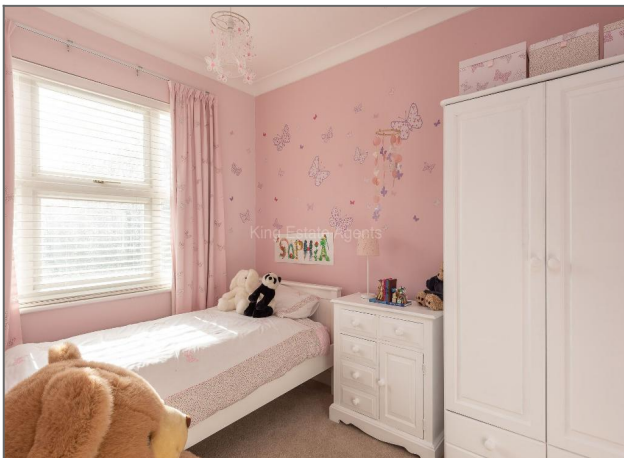
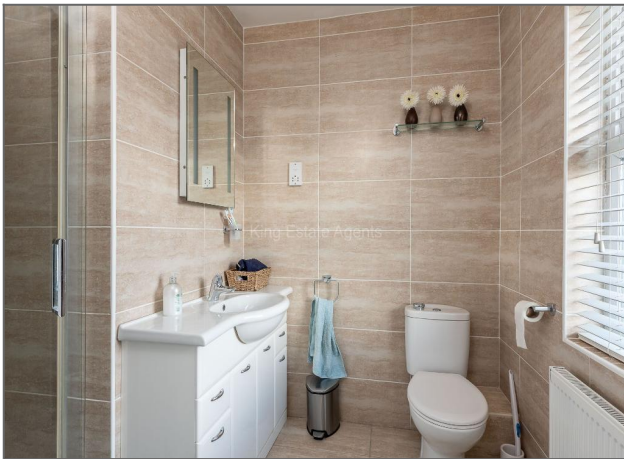
Front - Gravelled driveway leading to a detached double garage, front garden area with some small shrubs.

Rear Garden - A beautiful landscaped rear garden with patio and decked seating areas, an array of shrubs and mature trees. Lawn area, all enclosed by a fenced surround.

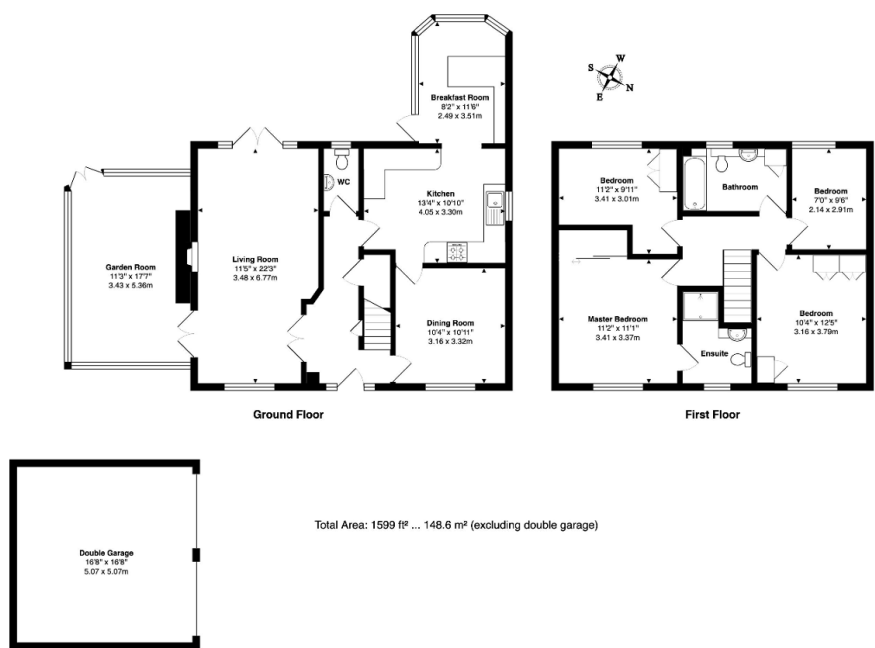
Location

Willen is situated in north East Milton Keynes, providing easy access to the M1 and still within close proximity to central Milton Keynes and the train station. Willen itself has its own local centre along with Willen Lake, which offers various recreational activities including watersports.









Floor plans produced for King Estate Agents by MK Property Photography. All floor plans are drawn using various software and are not intended to be scale drawings. All measurements are approximate and should not be relied upon for valuation purposes. Copyright MK Property Photography.

