



High Street MK46 4EB

Evelyn House is a charming GRADE II listed Georgian Townhouse, situated in the heart of Olney, boasting a BEAUTIFUL WEST FACING REAR GARDEN, detached DOUBLE GARAGE and an impressive 30ft x 22ft living/dining room. This wonderful property boasts original features, but offers further scope to extend into the large loft space (subject to relevant planning permissions). The property is on the high street within a short walk of Olney's array of independent retailers, coffee shops and restaurants.

The accommodation in brief comprises a large entrance hall, living/dining room with a fireplace and log burner, along with an original Georgian window overlooking the garden, a refitted kitchen with AGA, cloakroom and a family room with underfloor heating and bi-folding doors onto the patio. Upstairs there is an impressive master bedroom with four piece en suite, two further double bedrooms and a shower room. Outside there is a beautiful rear garden that comprises a patio area leading onto a lawn area with a mix of mature trees, plants and flowers, all enclosed by a wall and fenced surround. To the rear of the garden is a large driveway, accessed via gates and a detached double garage.

Accommodation

GRADE II LISTED GEORGIAN
TOWNHOUSE

BEAUTIFUL MATURE
GARDEN

DETACHED DOUBLE
GARAGE

30FT X 22FT LIVING DINING
ROOM

KITCHEN/BREAKFAST
ROOM WITH AGA

FAMILY ROOM WITH BI-
FOLD DOORS

LARGE ENTRANCE HALL

MASTER BEDROOM WITH
EN SUITE



Ground Floor

Entrance Hall - Stairs rising to first floor landing, radiator, tiled flooring, storage cupboard, doors to;

Living/Dining Room - Fireplace with log burner, radiator, feature Georgian bay window with window seat to rear aspect. Feature stained glass window to front aspect, exposed wooden floor boards.

Kitchen/Breakfast Room - Refitted to comprise sink and drainer with mixer tap over and cupboard under, a further range of base and eye level units. granite worktops with up stands, tiled flooring. Space for washing machine/tumble dryer. fridge freezer, built in oven/hob and extractor.

Cloakroom - White suite fitted to comprise low level WC, wash hand basin with cupboard under, heated towel rail.

Family Room - Built in 2011 this extended room has bi-fold doors onto the patio, a further door to the garden and under floor heating.

First Floor

Master Bedroom - Double glazed sash windows overlooking rear garden. Door to ensuite.

Ensuite - Shower cubicle with wall mounted shower, panel bath, low level WC, wash hand basin. Access to loft.

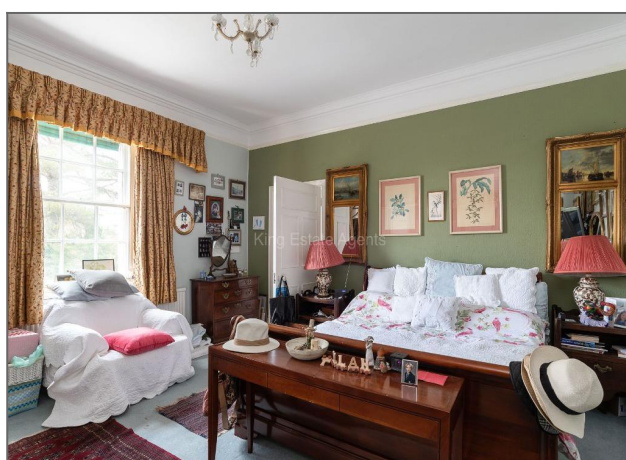
Bedroom Two - Fitted wardrobe, sash window to front aspect, radiator, wash hand basin.

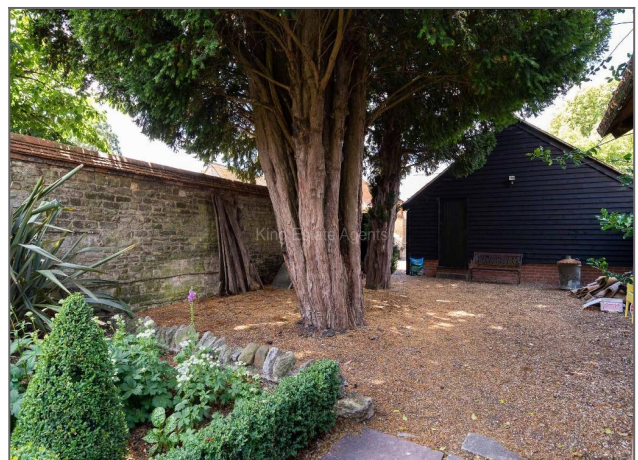
Bedroom Three - Airing cupboard, storage cupboard, window to rear aspect.

Exterior

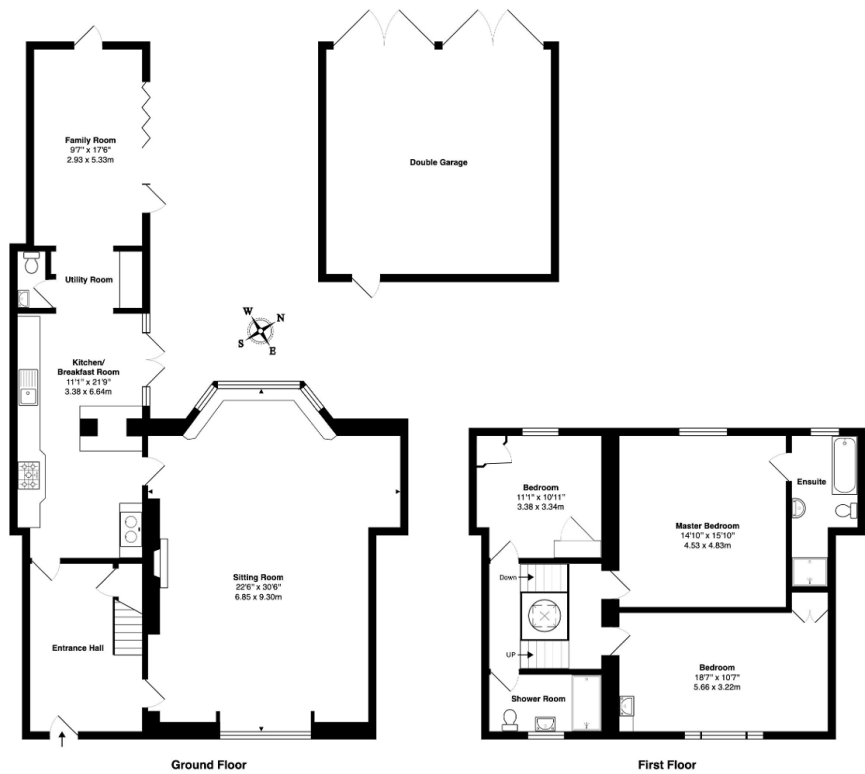
Rear Garden - Large Patio area leading onto further lawn area with an array of mature trees, shrubs and flowers. Enclosed by a brick wall and fenced surround. Large graveled driveway leading to a detached double garage and gated access.











Total Area: 2026 ft² ... 188.2 m² (excluding double garage)

Floor plan produced for King Estate Agents by MK Property Photography. All floor plans are drawn using various skill and care however MK Property Photography accepts no liability whatsoever for any error or omission or inadvertent mis-statement in a floor plan. Floor plans are for layout purposes only and are not intended to be scale drawings. All measurements are approximate and should not be relied upon for valuation purposes. Copyright MK Property Photography.

