



Rusland Circus , Emerson Valley, MK4 2LL

King Estate Agents are proud to bring to the market this extremely well presented FOUR DOUBLE BEDROOM detached family home, boasting a LOVELY REAR GARDEN and good size driveway leading to a DETACHED DOUBLE GARAGE. The property boasts THREE RECEPTION rooms, three bathroom/en suites and a conservatory. The accommodation in brief comprises entrance hall, cloakroom, study, dining room, kitchen/breakfast room, utility room, living room and study. Upstairs there are four double bedrooms with en suites to bedrooms one and two, and a family bathroom. Outside there are well maintained front and rear gardens and a generous driveway leading to a detached double garage.

Accommodation

FOUR DOUBLE BEDROOMS

DETACHED FAMILY HOME

DETACHED DOUBLE
GARAGE

GOOD SIZED DRIVEWAY

THREE RECEPTION ROOMS

BEAUTIFULLY MAINTAINED
REAR GARDEN

SOUGHT AFTER LOCATION

TWO EN SUITES AND A
BATHROOM

Ground Floor

Entrance Hall -

Cloakroom -

Study - 7' 8" x 10' 0" (2.37m x 3.07m)

Kitchen/Breakfast Room - 11' 7" x 13' 10" (3.55m x 4.23m)

Utility Room -

Dining Room - 10' 7" x 11' 11" (3.25m x 3.64m)

Living Room - 19' 5" x 12' 11" (5.94m x 3.94m) Largest measurement taken.

Conservatory - 7' 1" x 10' 5" (2.18m x 3.2m)



First Floor

First Floor Landing -

Master Bedroom - 12' 1" x 10' 11" (3.7m x 3.33m)

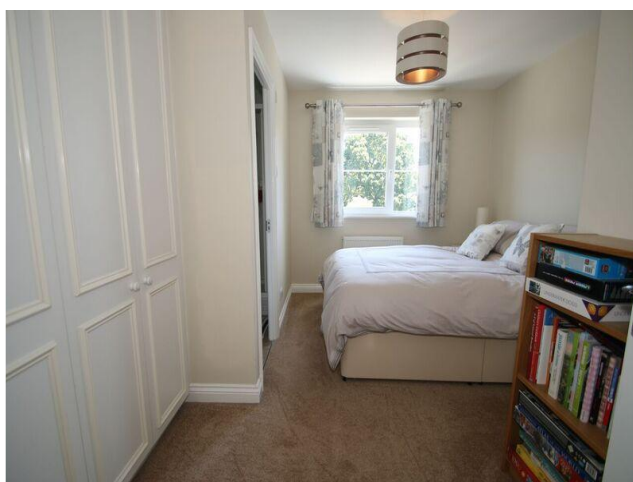
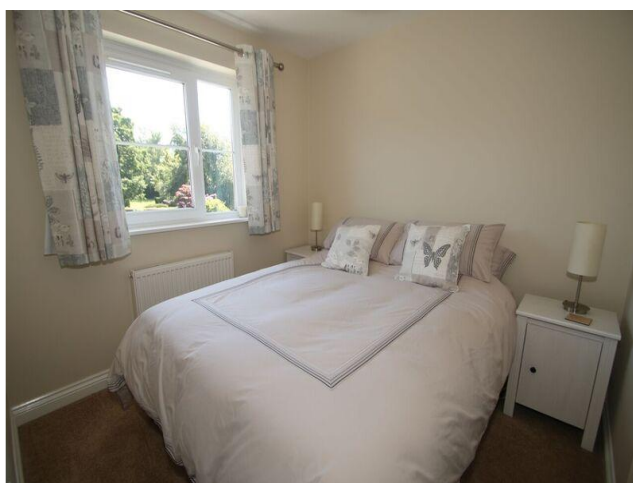
En suite -

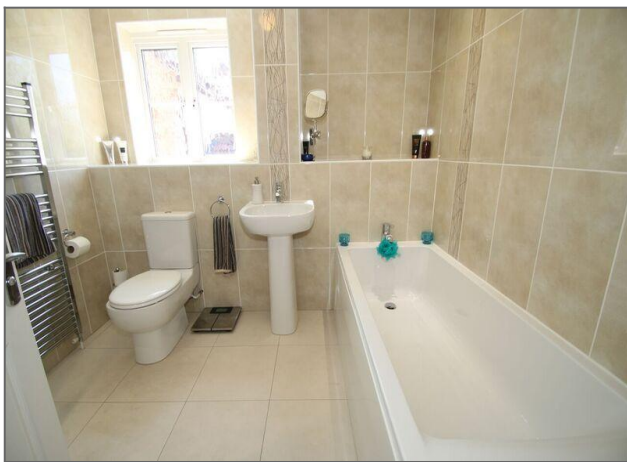
Bedroom Two - 13' 1" x 8' 5" (4m x 2.59m)

Bedroom Three - 10' 11" x 8' 6" (3.33m x 2.6m)

Bedroom Four - 10' 11" x 7' 8" (3.34m x 2.36m)

Bathroom -





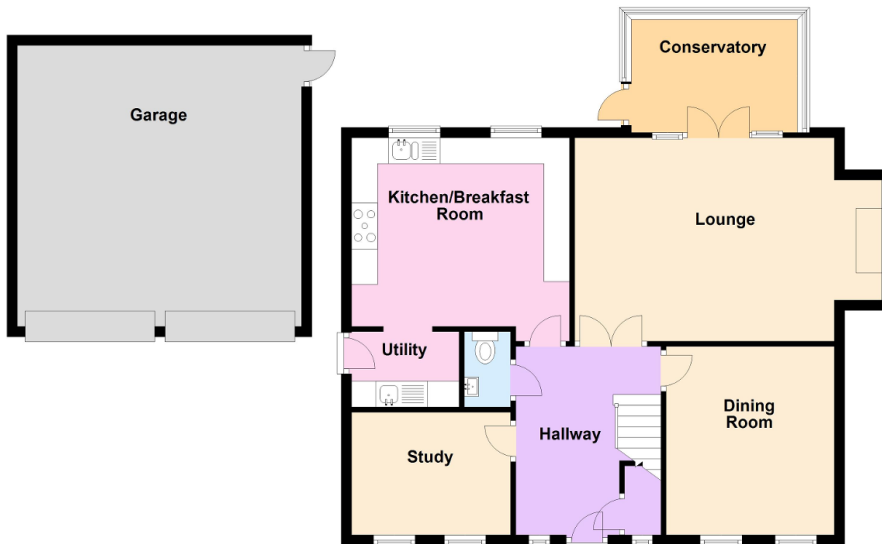




Total area: approx. 155.3 sq. metres

Whilst every attempt has been made to ensure the accuracy of the floor plan contained here, measurements of doors, windows, rooms and any other items are approximate and no responsibility is taken for any error, omission or mis-statement. Reference to square area usually includes all areas of accommodation shown on the plan excluding garages. This plan is for illustrative purposes only and should be used as such by any prospective purchaser. The services, systems and appliances shown have not been tested and no guarantee as to their operability or efficiency can be given.
Plan produced using PlanUp.

Ground Floor
Approx. 81.3 sq. metres



Total area: approx. 155.3 sq. metres

Whilst every attempt has been made to ensure the accuracy of the floor plan contained here, measurements of doors, windows, rooms and any other items are approximate and no responsibility is taken for any error, omission or mis-statement. Reference to square area usually includes all areas of accommodation shown on the plan excluding garages. This plan is for illustrative purposes only and should be used as such by any prospective purchaser. The services, systems and appliances shown have not been tested and no guarantee as to their operability or efficiency can be given.
Plan produced using PlanUp.

