



Rackstraw Grove , Old Farm Park, MK7 8PZ

King Estate Agents are proud to market this four bedroom EXECUTIVE home, set on a generous sized WRAP AROUND PLOT, within the popular location of Old Farm Park. On the ground floor the accommodation comprises an entrance hall, refitted cloakroom, living room, conservatory, REFITTED KITCHEN/DINING ROOM, utility room and study extended with conservatory. On the first floor there is a galleried landing, master bedroom with dressing room and en suite, three further bedrooms and a refitted shower room. Outside there is a good size garden and a driveway to the front providing off road parking for several vehicles and a double garage.

Accommodation

FOUR BEDROOM
EXECUTIVE HOME

LARGE WRAP AROUND
PLOT

DOUBLE GARAGE

DRIVEWAY FOR SEVERAL
VEHICLES

EN SUITE AND DRESSING
ROOM TO MASTER

REFITTED KITCHEN/DINING
ROOM

LIVING ROOM

CONSERVATORY AND
STUDY

Ground Floor

Entrance Hall - Stairs rising to first floor landing, under stair storage cupboard, large cloaks cupboard.

Cloakroom - Refitted to comprise low level WC, wash hand basin with cupboard under, radiator, tiled flooring, tiled splash back, double glazed window to side aspect.

Living Room - Gas feature fireplace, double glazed bay window to front aspect, double glazed patio door to conservatory.

Conservatory - Underfloor heating, double glazed doors to garden

Kitchen/Dining Area - Refitted to comprise stainless steel sink and drainer with mixer tap over and cupboard under, a further range of base and eye level units, laminate worksurface with upstands. Integrated dishwasher, hob/extractor, double oven. Tiled flooring, breakfast bar, three radiators, three double glazed window to rear aspect and side aspect.

Utility Room - Refitted to comprise stainless steel sink and drainer with mixer tap over and cupboard under, a range of units, space for washing machine, tumble dryer, double glazed door to side.

Study - Extended with conservatory area with underfloor heating, Radiator, double glazed window to front aspect.

Bedroom Four - Radiator, fitted wardrobe, double glazed window to rear aspect.

Bedroom Four - Radiator, fitted wardrobe, double glazed window to rear aspect.

First Floor

Galleried Landing - Velux window, airing cupboard, radiator, access to loft, door to;

Master Bedroom - Fitted wardrobes, radiator, double glazed window to rear aspect, archway to dressing room.

Dressing Room - Fitted wardrobes and double glazed window to side aspect.

Ensuite - Fitted to comprise shower cubicle with shower over, wash hand basin with cupboard under, low level WC, heated towel rail, double glazed window.

Bedroom Two - Radiator, double glazed window to rear aspect.

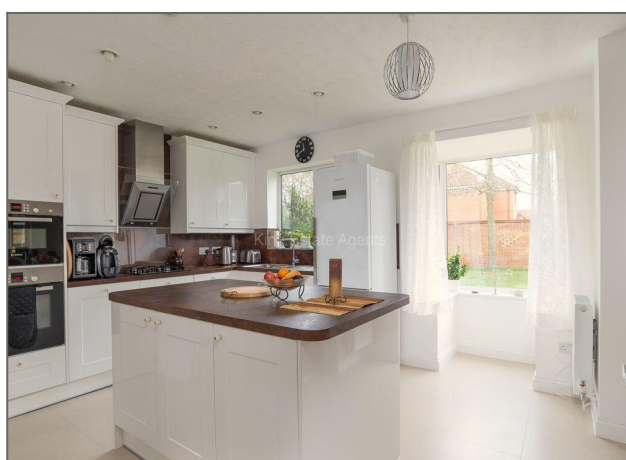
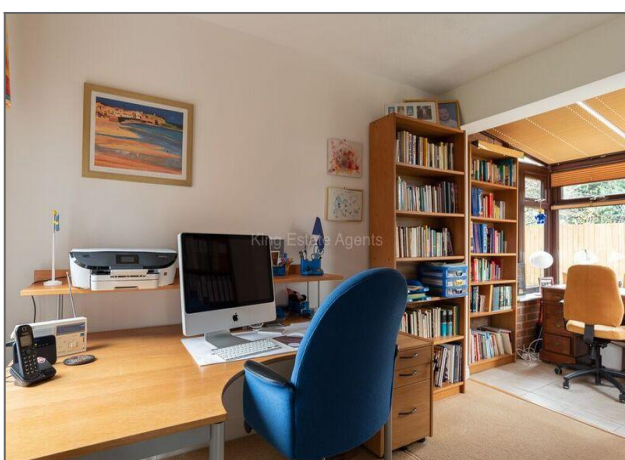
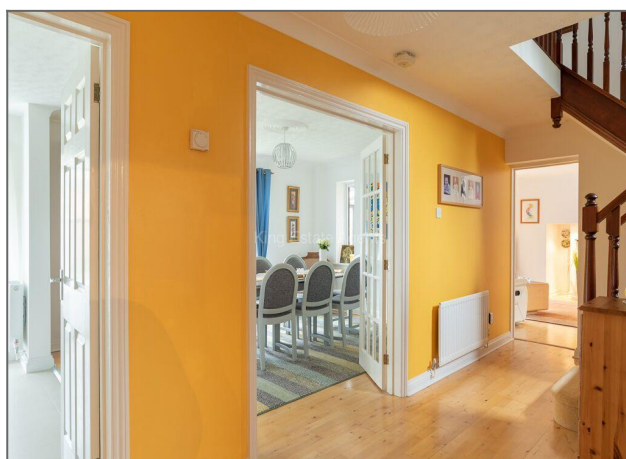
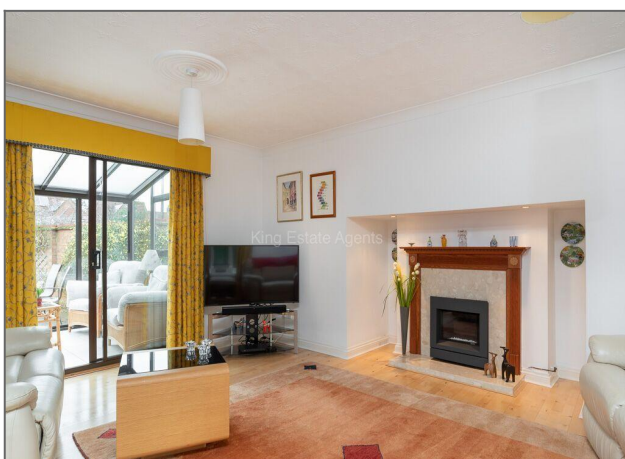
Bedroom Three - Radiator, double glazed window to front aspect.

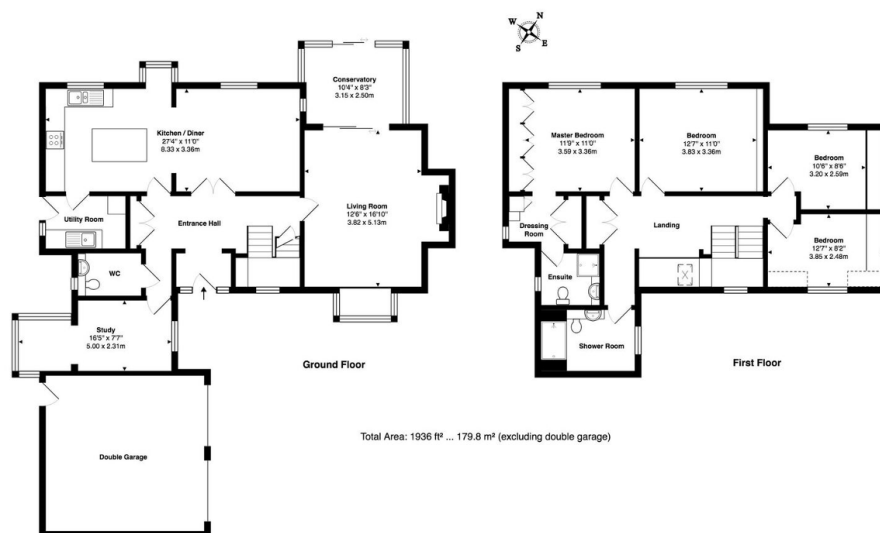
Shower Room - White suite fitted to comprise double shower cubicle with shower over, low level WC, wash hand basin with cupboard under, part tiled surround, double glazed window to front aspect.

Exterior

Rear Garden - Wrap around garden.







Floor plan produced for King Estate Agents by MK Property Photography. All floor plans are drawn using various skills and care however MK Property Photography accepts no liability whatsoever for any error or omission or misstatement or misrepresentation in a floor plan. Floor plans are for layout purposes only and are not intended to be scale drawings. All measurements are approximate and should not be relied upon for valuation purposes. Copyright MK Property Photography