



## Rylstone Close , Heelands, MK13 7QT

King Estate Agents are proud to bring to the market this spacious five bedroom SELF-BUILD RESIDENCE, set within close proximity to Central Milton Keynes. The accommodation to the ground floor in brief comprises off an entrance hall leading to dining room with FEATURE WOODEN STAIRCASE, living room with FIREPLACE, family room, study and LARGE kitchen/ breakfast room, and a utility room. Upstairs there is a master bedroom with en-suite, four further bedrooms with a spacious family bathroom with a corner bath and shower. Outside there is a driveway leading to a double garage and off street parking for at least three cars. The kitchen, family and living room all have double french doors leading onto a large back garden.

## Accommodation

SELF BUILD

FEATURE WOODEN  
STAIRCASE

DOUBLE VOLUME

FIVE BEDROOMS

THREE RECEPTION ROOMS

LARGE KITCHEN/DINER

SEPERATE UTILITY ROOM

LARGE GARDEN



## Ground Floor

Entrance -

Dining Room -

Kitchen/Breakfast Room -

Utility Room -

Family Room -

Cloakroom -

Living Room -

Study -



## First Floor

Master Bedroom -

En-suite -

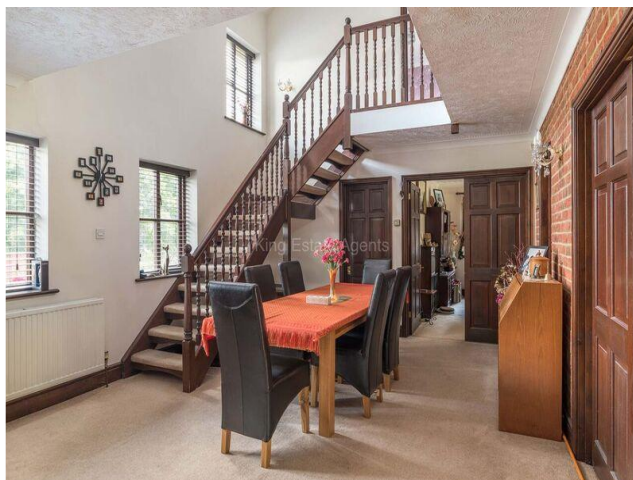
Bedroom Two -

Bedroom Three -

Bedroom Four -

Bedroom Five -

Family Bathroom -









Floor plan produced for King Estate Agents by MK Property Photography. All floor plans are drawn using various software and are based on MK Property Photography's records. No liability is accepted for any error or omission in the floor plan. Floor plans are for general guidance only and are not intended to be scale drawings. All measurements are approximate and should not be relied upon for construction purposes. Copyright MK Property Photography.

