



Welssummer Grove , Shenley Brook End, MK5 7GE

King Estate Agents are proud to bring to the market this **FOUR DOUBLE BEDROOM DETACHED FAMILY HOME**, in the **POPULAR AREA OF SHENLEY BROOK END**. The accommodation to the ground floor in brief comprises entrance hall, cloakroom, living room, kitchen/diner, utility room as well as a **CONSERVATORY** leading on to a stunning rear garden. The **GARDEN** is beautifully **LANDSCAPED** with a greenhouse in the corner of the plot. Upstairs there is a master bedroom with en suite, three further bedrooms and a family bathroom. Outside there is a driveway for several vehicles leading to a **DOUBLE GARAGE**. The property is in close proximity of the sought after Shenley Brook End Secondary School.

Accommodation

FOUR DOUBLE BEDROOMS

FAMILY HOME

SOUGHT AFTER LOCATION

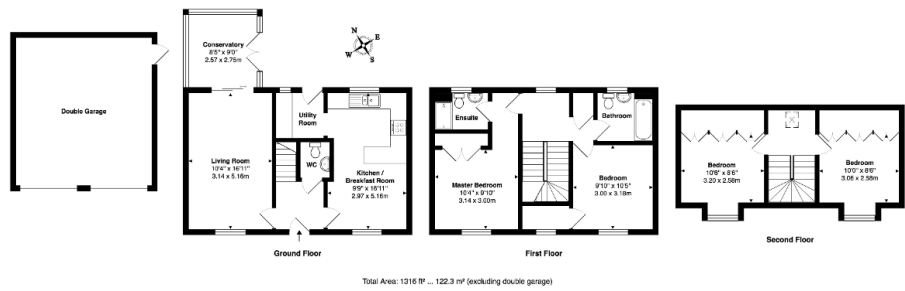
**BEAUTIFUL LANDSCAPED
REAR GARDEN**

**FAMILY BATHROOM AND
DOWNSTAIRS CLOAKROOM**

CONSERVATORY

**DOUBLE GARAGE WITH
DRIVEWAY PARKING**

EPC RATING: C



Floor plan produced by King Estate Agents by MK Property Photography. All floor plans are shown using various sizes and can however MK Property Photography accepts no liability whatsoever for any error or omission or inaccuracy in the floor plan. Floor plans are for general guidance only and are not intended to be used as drawings. All measurements are approximate and should not be relied upon for valuation purposes. Copyright MK Property Photography.

