



Top Fair Furlong , Redhouse Park, MK14 5FQ

NO UPPER CHAIN! MODERN OPEN PLAN LIVING AREA! King Estate Agents are delighted to bring to the market this well presented three bedroom property, situated in the popular location of Redhouse Park. The accommodation in brief comprises entrance hall, cloakroom, open plan living area with modern fitted kitchen, master bedroom with vaulted ceiling and en suite, two further bedrooms and a family bathroom. Outside there are front and rear gardens and allocated parking to the rear of the property.

Accommodation

THREE BEDROOMS

SEMI DETACHED HOUSE

OPEN PLAN LIVING AREA

CLOAKROOM

MASTER BEDROOM WITH
EN SUITE

REAR GARDEN

ALLOCATED PARKING

NO UPPER CHAIN

Ground Floor

Entrance Hall - Storage Cupboard, radiator, stairs rising to first floor landing, doors to;

Cloakroom - White suite fitted to comprise low level WC, pedestal wash hand basin, radiator, double glazed window to front aspect.

Open Plan Living Area - Double glazed windows and doors to front and rear aspects, radiator.

Kitchen - Stainless steel sink and drainer with mixer tap over and a cupboard under, a further range of base and eye level units, laminate work surfaces with up stands, built in oven/hob with extractor fan, space for washing machine and fridge/freezer.

Master bedroom -

First Floor

First floor landing - Airing cupboard, radiator, doors to;

Master bedroom - Double glazed window to the front aspect, Juliette balcony, radiator, two fitted wardrobes.

En suite - White suite fitted to comprise double shower cubicle with wall mounted shower, low level WC, pedestal wash hand basin, partly tiled surround, double glazed window to rear aspect, heated towel rail.

Bedroom Two - Radiator, double glazed window to rear aspect.

Bedroom Three - Radiator, double glazed window to the front aspect.

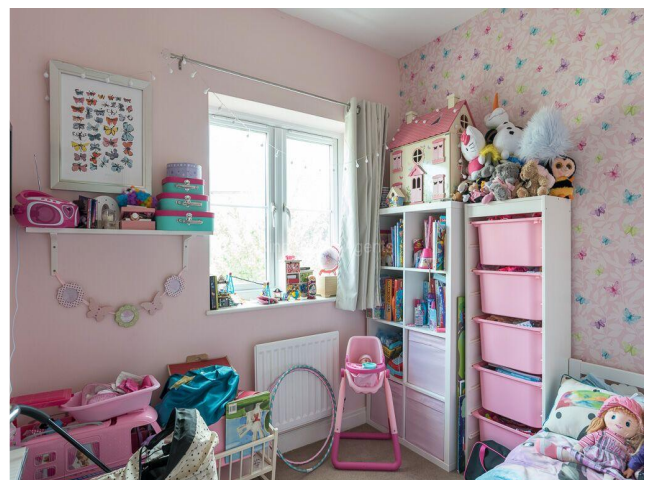
Family Bathroom - White suite fitted to comprise panel bath with shower over, low level WC, pedestal wash hand basin, radiator, double glazed window to front aspect.

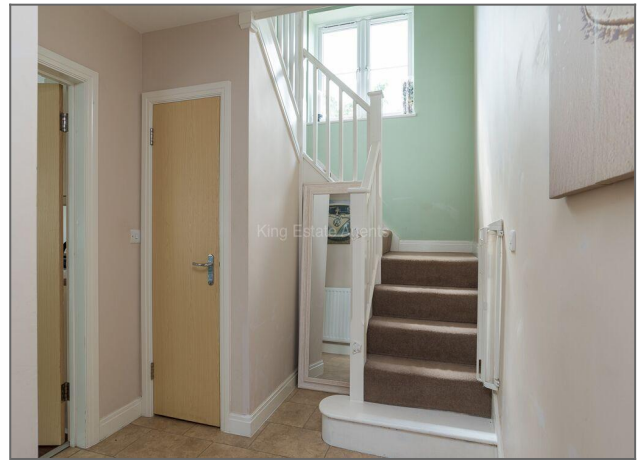
Exterior

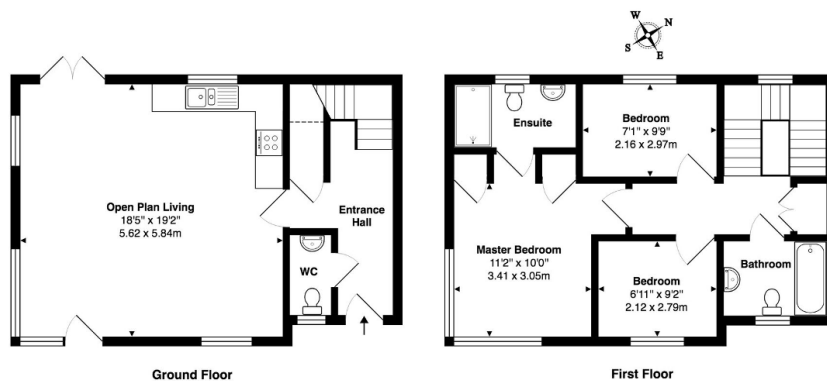
Rear Garden - Laid to lawn with patio area, enclosed by a fenced surround, rear access to parking area.

Location

Redhouse Park is a modern lake side development which is located only 1.5 miles from the the Historic Town of Newport Pagnell with its variety of shops and amenities, and is about 10 minutes" drive from Milton Keynes central railway station and the M1, both offering direct link in to London. The property is within walking distance of parks, lakes and canal walks.







Total Area: 980 ft² ... 91.1 m²

Floor plan produced for King Estate Agents by MK Property Photography. All floor plans are drawn using various skill and care however MK Property Photography accepts no liability whatsoever for any error or omission or inadvertent mis-statement in a floor plan. Floor plans are for layout purposes only and are not intended to be scale drawings. All measurements are approximate and should not be relied upon for valuation purposes. Copyright MK Property Photography.

