



Isaacson Drive , Wavendon Gate, MK7 7SP

King Estate Agents are delighted to bring to the market this MUCH IMPROVED AND REFURBISHED FAMILY HOME, boasting FOUR DOUBLE bedrooms and a generous sized plot. The accommodation in brief comprises an entrance hall, study, living room, REFITTED KITCHEN/DINER, utility room, cloakroom, store room and conservatory. Upstairs there is a master bedroom with REFITTED EN SUITE, three further double bedrooms and a refitted family bathroom. Outside there is a driveway and front lawn and a good sized landscaped rear garden.

Accommodation

**FOUR DOUBLE BEDROOM
DETACHED**

**MODERNISED
THROUGHOUT**

REFITTED KITCHEN/DINER

**REFITTED BATHROOM AND
EN SUITE**

LIVING ROOM AND STUDY

CONSERVATORY

**LANDSCAPED REAR
GARDEN**

**DRIVEWAY AND FRONT
GARDEN**

Ground Floor

Entrance Hall -

Study -

Living Room -

Kitchen/Diner -

Utility Room -

Store room -

Conservatory -

First Floor

First floor landing -

Master Bedroom -

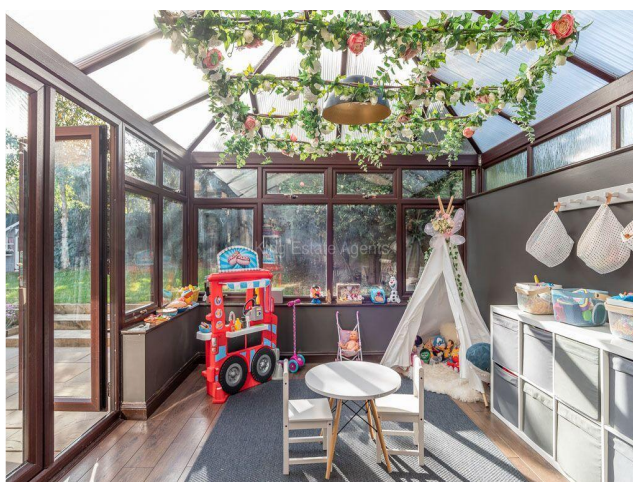
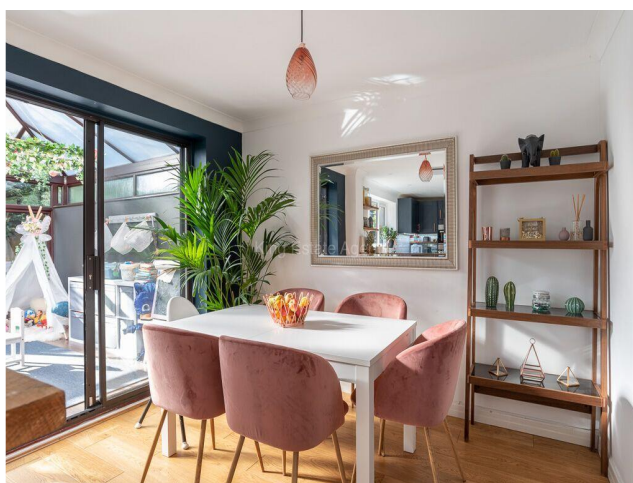
En suite -

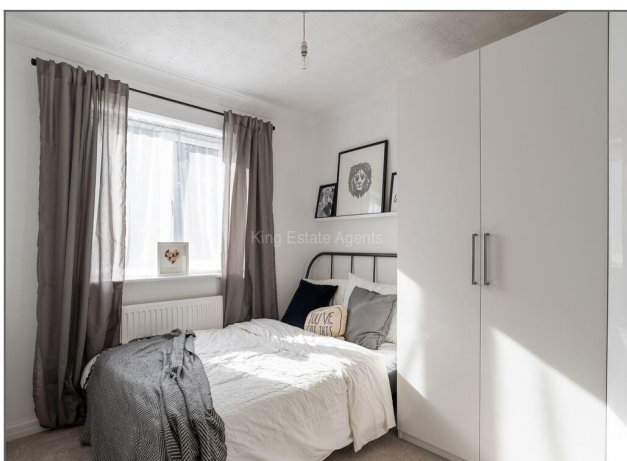
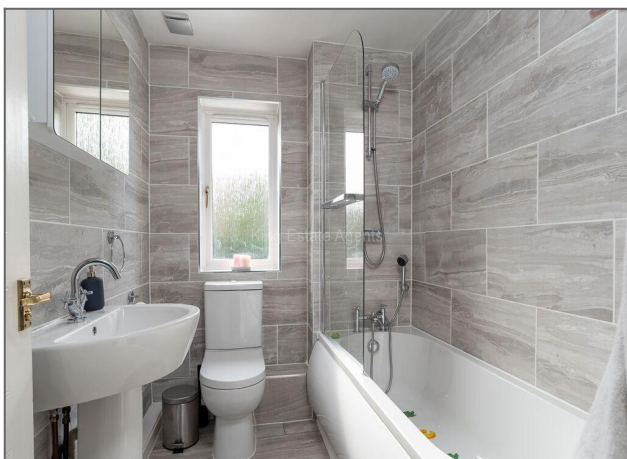
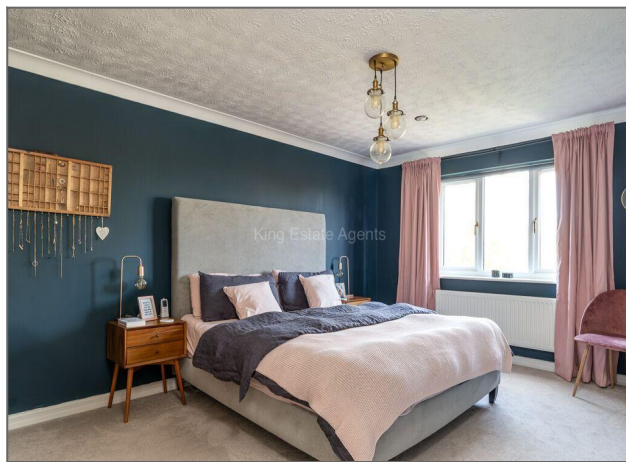
Bedroom Two -

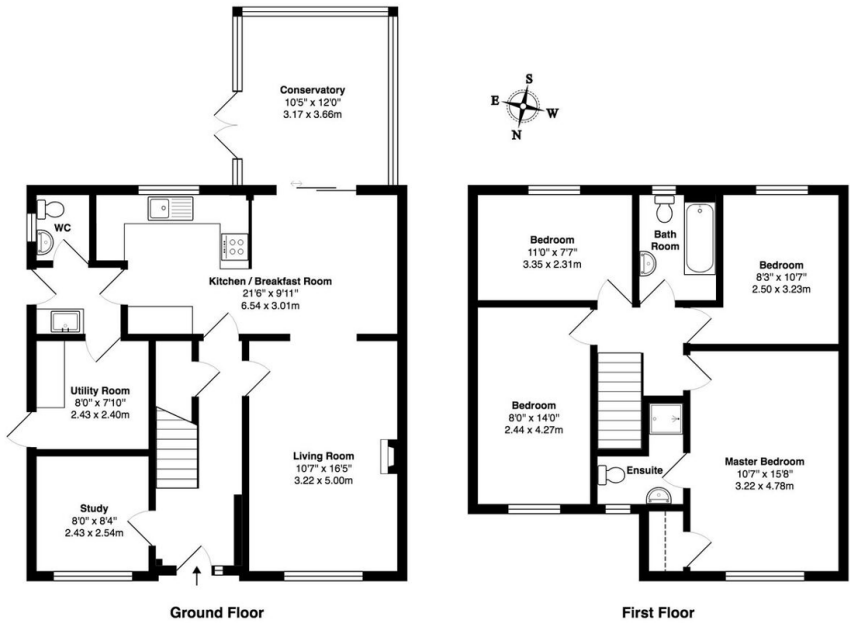
Bedroom three -

Bedroom Four -

Family Bathroom -







Total Area: 1451 ft² ... 134.8 m²

Floor plan produced for King Estate Agents by MK Property Photography. All floor plans are drawn using various skill and care however MK Property Photography accepts no liability whatsoever for any error or omission or inadvertent mis-statement in a floor plan. Floor plans are for layout purposes only and are not intended to be scale drawings. All measurements are approximate and should not be relied upon for valuation purposes. Copyright MK Property Photography.

