



## Weldon Rise , Loughton, MK5 8BW

King Estate Agents are proud to bring to the market, this unique detached residence, offering over 2500sqft living accommodation, situated in the highly sought after location of Loughton. The property boasts a beautiful rear garden, large driveway and double garage. The accommodation in brief comprises an entrance hall, cloakroom, kitchen/breakfast room, utility room, a dining hall with galleried landing and doors onto the rear garden, study, bedroom two with en suite and a 20ft living room with log burner and further doors onto the rear garden. Upstairs there is a large landing area, master bedroom with dressing room and five piece en suite, two further bedrooms and a family bathroom. Outside there is a generous driveway leading to a double garage, a rear garden with an array of mature shrubs and trees with a patio area and raised decking area.

## Accommodation

UNIQUE DETACHED HOME

HIGHLY SOUGHT AFTER  
LOCATION

FOUR BEDROOMS

THREE BATHROOM/EN  
SUITE

DOUBLE GARAGE

BEAUTIFUL REAR GARDEN

LIVING ROOM WITH LOG  
BURNER

DINING HALL WITH  
GALLERIED LANDING

## Ground Floor

**Entrance Hall** - Door to;

**Cloakroom** - White suite fitted to comprise low level WC, pedestal wash hand basin, heated towel rail, double glazed window to front aspect.

**Kitchen/Breakfast Room** - Fitted to comprise a range of base and eye level units, stainless steel sink and drainer with mixer tap over and cupboard under. Integrated fridge and dishwasher, Rangemaster cooker with five burner gas hob plus warming plate drawer with extractor over. Tiled flooring, radiator, double glazed window to side aspect, double glazed door onto garden.

**Utility Room** - Fitted to comprisesink and drainer with mixer tap over and cupboard under, wall mounted boiler, space for washing machine, freezer, double glazed window to front aspect, door leading on to garden.

**Dining Hall** - Stairs rising to first floor galleried landing gas fireplace, three radiators, double glazed doors onto garden, doors to;

**Sitting Room** - Two sets of double glazed patio doors leading on to the garden, log burner, three radiators.

**Study** - Double glazed window to side aspect, radiator.

**Bedroom** - Fitted wardrobe, radiator, double glazed window to side aspect, door to ensuite.

**Ensuite** - Fitted to comprise shower cubicle with wall mounted shower, radiator, low level WC, pedestal wash hand basin, double glazed window to side aspect.

## First Floor

**First Floor Landing** - Two radiators, double glazed window to front aspect, airing cupboard, two storage cupboards.

**Master Bedroom** - Integrated wardrobes plus dressing table and two drawer unit. Two double glazed windows

**Dressing Room** - Double wardrobes, radiator, door to;

**Ensuite** - Corner bath, low level WC, bidet, double storage cupboard, radiator, part tiled surround, double glazed window to side aspect.

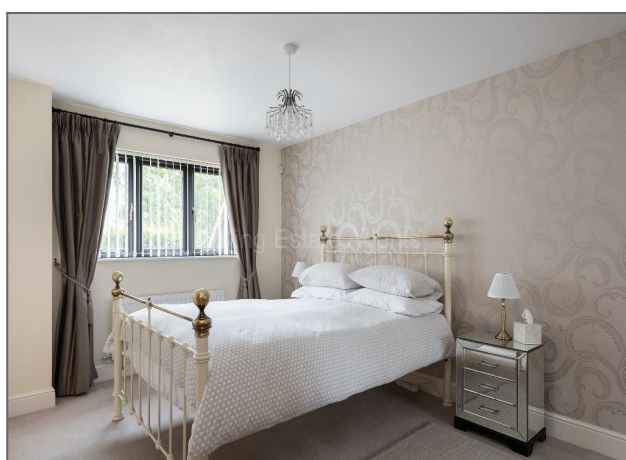
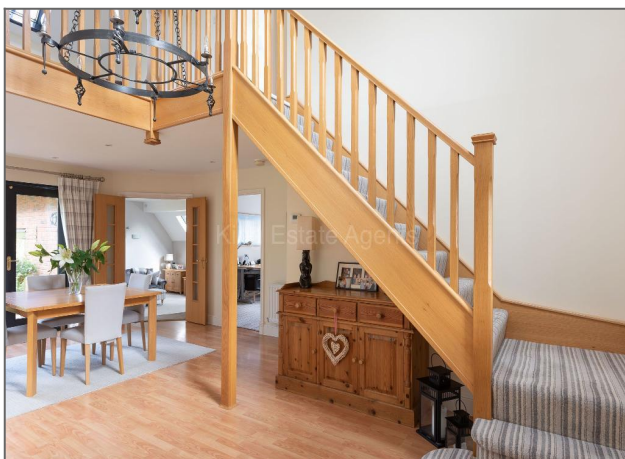
**Bedroom Two** - Two double glazed windows to side aspect, door leading into large attic space.

**Family Bathroom** - White suite fitted to comprise panel bath, low level WC, bidet, pedestal wash hand basin, storage cupboard, radiator, part tiled surround. Two double glazed windows to side aspect.

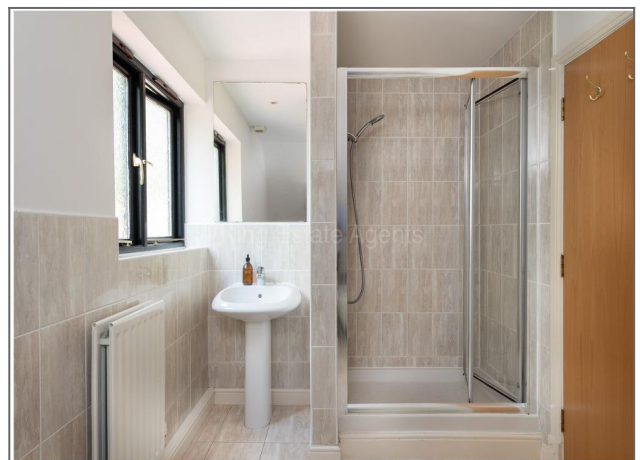
**Bedroom Four** - Three double glazed windows to side aspect, fitted wardrobes, radiator.

















Floor plans are for layout purposes only and are not intended to be scale drawings.  
All measurements, including window and door openings are approximate and should not be relied upon for valuation purposes.  
Please check all dimensions, shapes & compass bearings before making any decisions related upon them.  
MK Property Photography accepts no liability whatsoever for any error or omission or misstatement in a floor plan.  
Copyright MK Property Photography

