



Crathes Gardens , Westcroft, MK4 4JX

King Estate agents are delighted to bring to market this MODERN detached family home situated in the sought after location of Westcroft. The accommodation in brief comprises entrance hall, cloakroom, living room, kitchen/diner, utility room, master bedroom with en suite, three further bedrooms and a family bathroom. Outside there are front and rear gardens and a good sized driveway leading to a single garage(currently part converted as a bar).

Accommodation

MODERN DETACHED HOME

FOUR BEDROOMS

LARGE KITCHEN/DINER

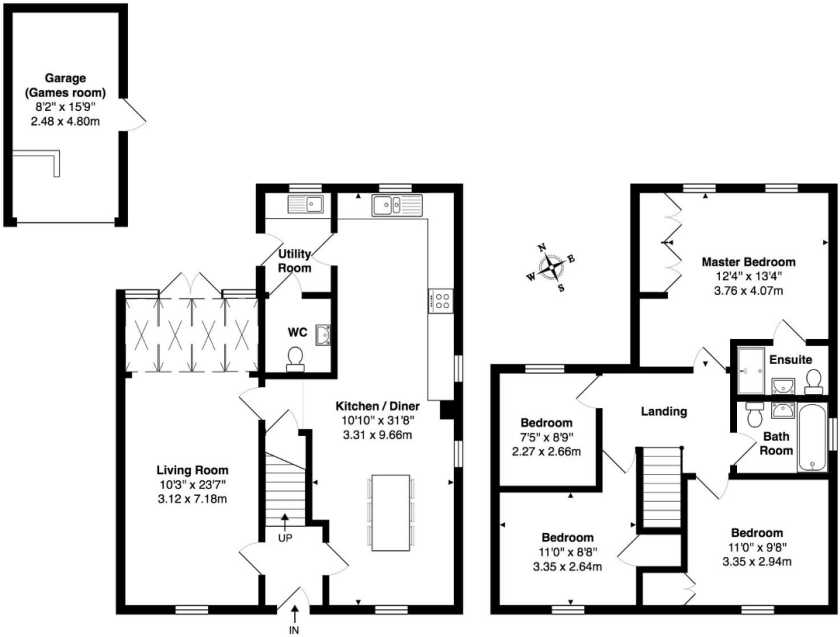
DUAL ASPECT LIVING ROOM

UTILITY ROOM

MASTER BEDROOM WITH EN SUITE

SINGLE GARAGE

EPC RATING: B



Total Area: 1364 ft² ... 126.8 m² (excluding garage (games room))
Floor plan produced for King Estate Agents by MK Property Photography.
All floor plans are drawn using various skill and care in accordance with the Q-Mark Code of Measuring Practice.
Floor plans are for layout purposes only and are not intended to be scale drawings.
All measurements are approximate and taken at maximum distances and should not be relied upon for valuation purposes.
MK Property Photography accepts no liability whatsoever for any error or omission or inadvertent mis-statement in a floor plan.

